

# Enabling the Hawaiian Keyboard

For students who will take the Online HSA in the Hawaiian language, the Hawaiian keyboard must be enabled so that they can enter Hawaiian characters.

The Technology Coordinator at your school will have to download and install the Hawaiian keyboard. The Hawaiian keyboard, which was developed by the University of Hawai‘i, can be downloaded here:

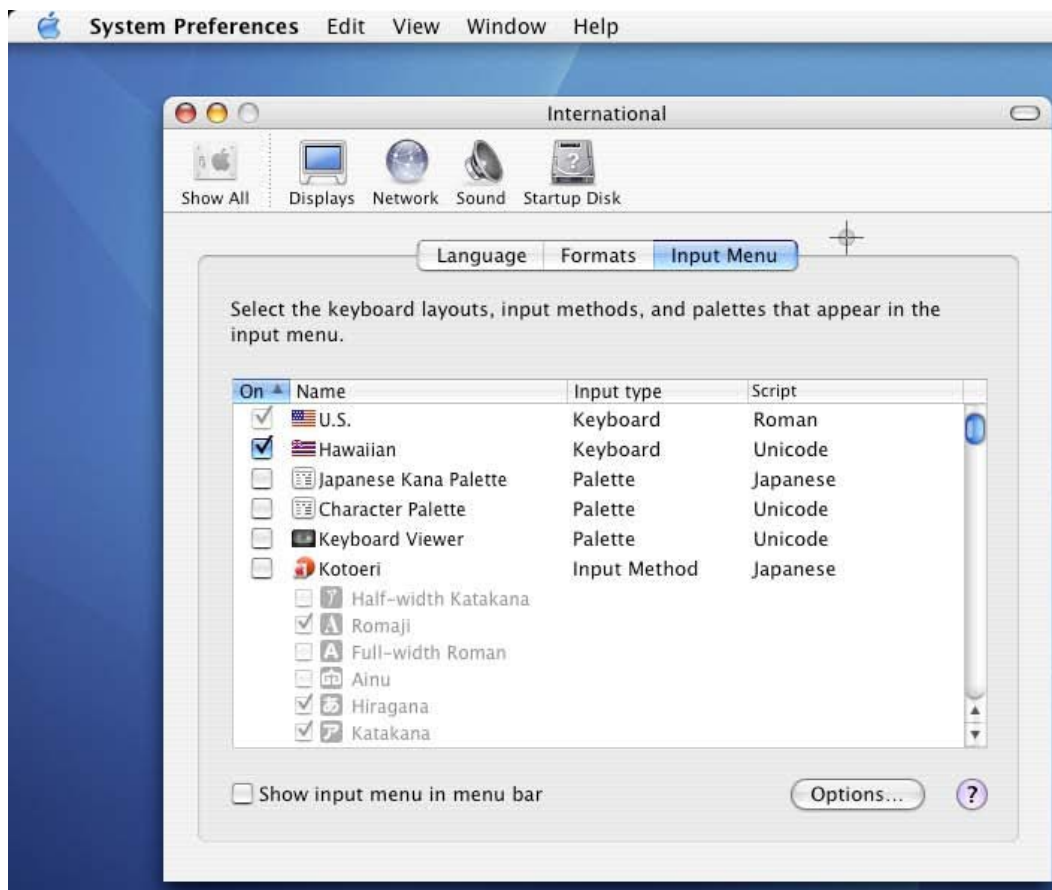
<http://www.olelo.hawaii.edu/enehana/win.php>

## Windows, Mac 10.4–10.6, and Linux Users

For most computers, after the Hawaiian keyboard has been downloaded and installed, students will just need to select “Hawaiian” from the Language drop-down at the top left of the Student Login page.

## Special Instructions for Mac OS 10.3 Users

1. Navigate to Apple → System Preferences → Personal → International.
2. On the International screen, click the **[Input Menu]** button.
3. Click the check box for Hawaiian (see below).



4. At this point your machine should have English and Hawaiian keyboards.  
**Launch Secure Browser 3.5 in OS 10.3.**
5. On the Student Login screen, navigate to the Language drop-down list at the top left. Select the Hawaiian language. The login page will change to display Hawaiian text.
6. To change to the Hawaiian keyboard, press the [**Command**] + [**Space bar**] keys ONCE. The keyboard will now produce Hawaiian characters. (To revert to the English keyboard, press the [**Command**] + [**Space bar**] keys again.)